

Excelon® Pro
Oil-fog lubricator
ø 6 ... 12 mm, G 1/8 ... G 3/8

Selected options provides ease of ordering

Configuration flexibility

Excellent value

No tools required for assembly

RoHS compliant

**Technical data**

Medium:

Compressed air

Operating pressure:

12 bar max.

Ambient temperature:

-20°C* to +52°C

*Consult our Technical Service for use below +2°C

Flow:

24 dm³/s (1440 l/min)max.

(port size G 1/4, inlet pressure 6,3 bar, $\Delta p = 0,5$ bar)

Ordering information

See page 2

Materials:

Body: PBT

Transparent bowl: Polycarbonate

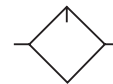
Sight-feed dome: Transparent nylon

Recommended lubricant: DTE light

Internal parts: Acetal

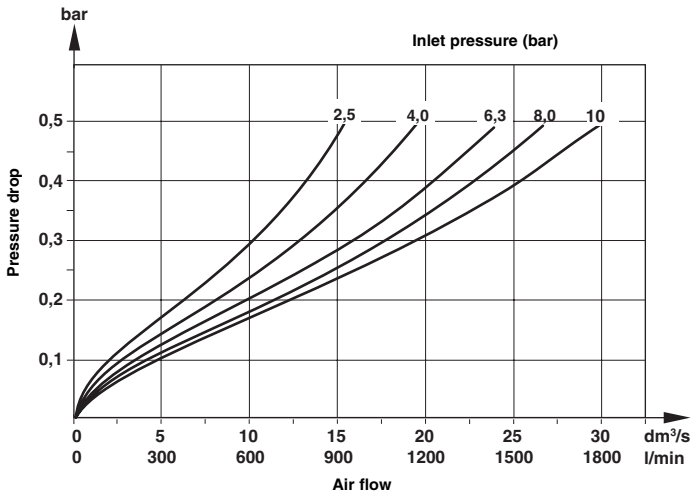
Elastomers: Bowl O-ring - Neoprene

All others - Nitrile



Flow characteristics

Port size: G 1/4



Standard model

Port Size	Model	Flow dm³/s *1)	Weight kg
G 1/4	L92C-2GP-ETN	24 (1440 l/min)	0,19

*1) Typical flow with at 6,3 bar inlet pressure and a 0,5 bar pressure drop.

Ordering example

Lubricator - G 1/4 with mounting bracket, transparent bowl.

Quote: L92C-2GP-ETN

Options selector

L92C-★ ★ P-ETN

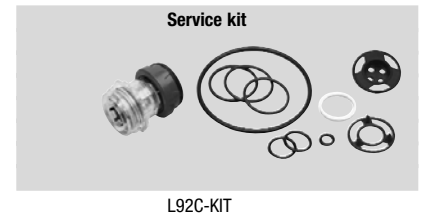
Connector with mounting bracket	Substitute	←
6 mm Push-In fitting	6D	
8 mm Push-In fitting	8D	
10 mm Push-In fitting	AD	
12 mm Push-In fitting	BD	
G 1/8	1G	
G 1/4	2G	
G 3/8	3G	
Connector without mounting bracket	Substitute	←
G 1/4	2V	
Connector	Substitute	←
Without	NN	

Accessories

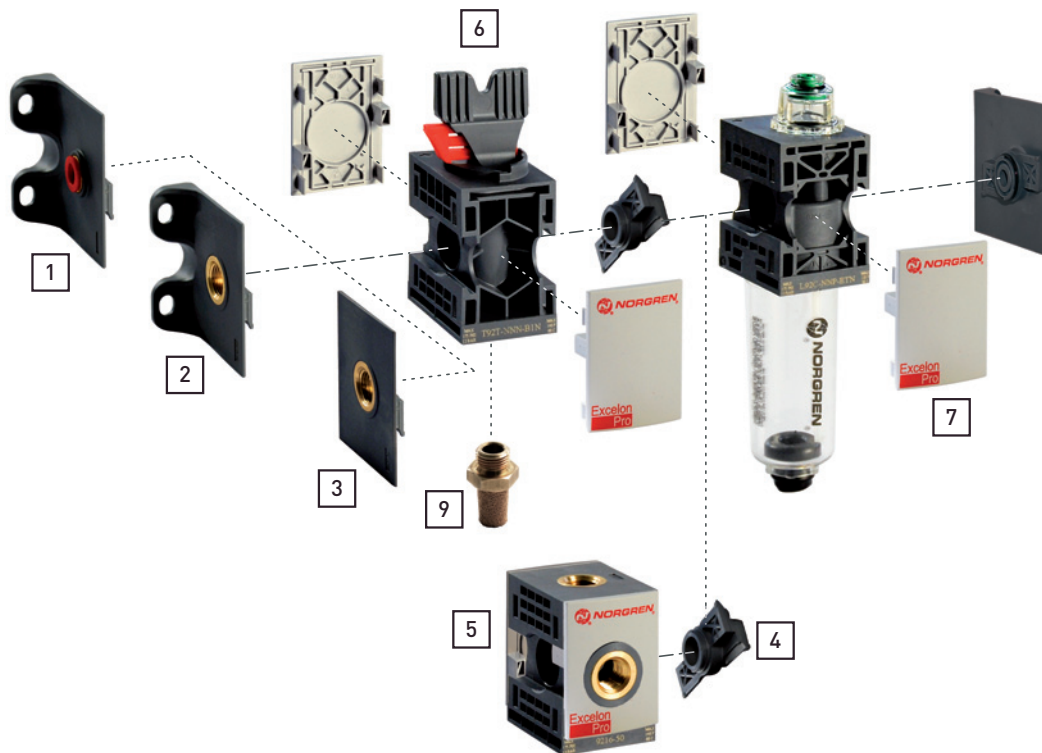
	Push-in fitting connector with mounting bracket	Threaded connector with mounting bracket	Threaded connector without mounting bracket
Port size	1	2	3
G1/8	-	9212KIT-1G	-
G1/4	-	9212KIT-2G	9211KIT-2V
G3/8	-	9212KIT-3G	-
ø 6 mm	9213KIT-6D	-	-
ø 8 mm	9213KIT-8D	-	-
ø 10 mm	9213KIT-AD	-	-
ø 12 mm	9213KIT-BD	-	-

	Quick connector	Porting block Plugs not included	Lockout/shut-off valve with exhaust port	Locking plate	Locking plate front plate of porting block	Silencer for shut-off valve
	4	5	6	7		9
	9210-50	9216-51	T92T-NN-B1N	9236-88/X10 (quantity 10)	9236-89/X10 (quantity 10)	T40M0500

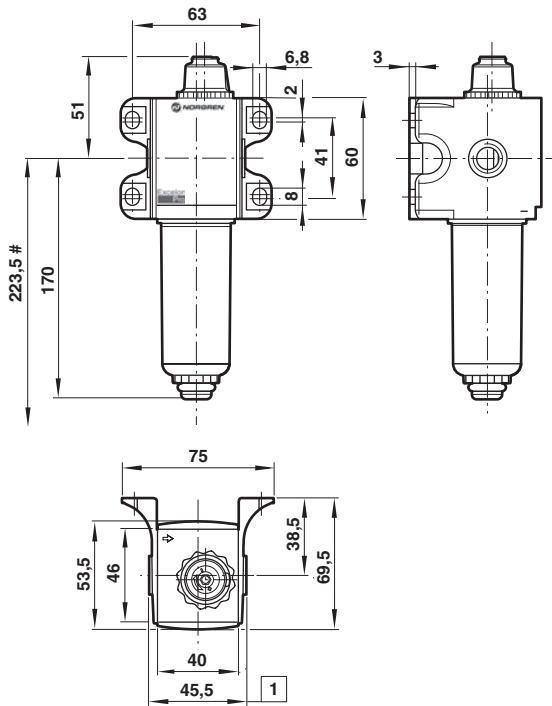
Service kit



Warning
Locking plates **MUST** be in place before pressurizing any Excelon Pro unit.

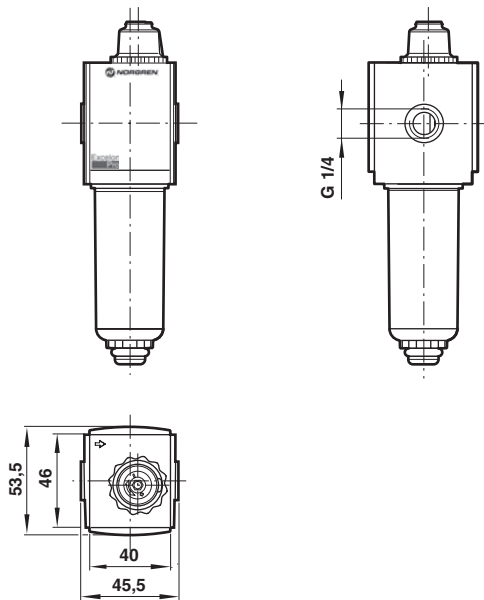


Lubricator with wall mounting bracket

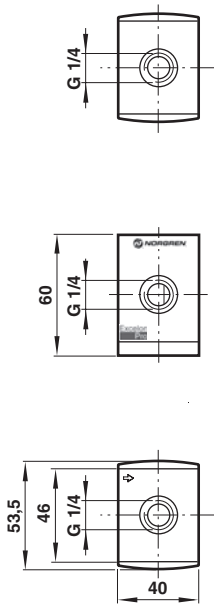


#	Minimum clearance required to remove bowl												
1	Connector Dimensions 1/8" and 1/4" threaded connectors shown. See below for port-to-port dimensions for additional connectors.												
	<table border="0"> <tr> <td>PIF Connector</td> <td>Port-to-port</td> </tr> <tr> <td>6 mm, 8 mm</td> <td>60</td> </tr> <tr> <td>10 mm, 12 mm</td> <td>62</td> </tr> <tr> <td>Threaded connector</td> <td></td> </tr> <tr> <td>1/8", 1/4"</td> <td>45,5</td> </tr> <tr> <td>3/8"</td> <td>76</td> </tr> </table>	PIF Connector	Port-to-port	6 mm, 8 mm	60	10 mm, 12 mm	62	Threaded connector		1/8", 1/4"	45,5	3/8"	76
PIF Connector	Port-to-port												
6 mm, 8 mm	60												
10 mm, 12 mm	62												
Threaded connector													
1/8", 1/4"	45,5												
3/8"	76												

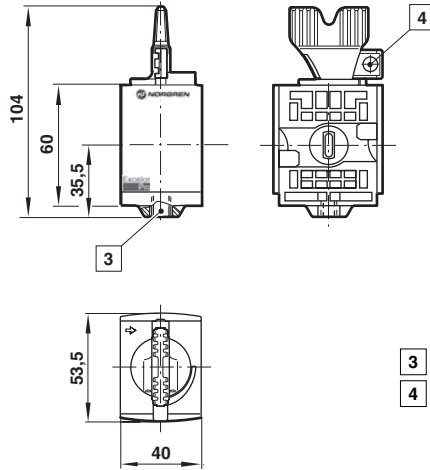
Lubricator without mounting bracket, G 1/4 port size



Porting block



Lockable/shut off valve



- 3** M5 exhaust port
- 4** Lever lockable only in closed position. Standard clip accepts ø 7 mm shackle.

Warning

These products are intended for use in industrial compressed air systems only. Do not use these products where pressures and temperatures can exceed those listed under **'Technical Data'**.

Before using these products with fluids other than those specified, for non-industrial applications, life-support systems, or other applications not within published specifications, consult NORGREN.

Through misuse, age, or malfunction, components used in fluid power systems can fail in various modes.

The system designer is warned to consider the failure modes of all component parts used in fluid power systems and to provide adequate safeguards to prevent personal injury or damage to equipment in the event of such failure.

System designers must provide a warning to end users in the system instructional manual if protection against a failure mode cannot be adequately provided.

System designers and end users are cautioned to review specific warnings found in instruction sheets packed and shipped with these products.